

## Emerging School of Public Health

VCU has a strategic plan to develop Virginia's first school of public health. We seek to develop a vibrant school of public health that:

- offers innovative, rigorous educational offerings flexible to meet diverse student needs
- provides a thriving transdisciplinary research base in which students will participate
- works synergistically with state and local public health practitioners to provide opportunities for translating research to public health practice

In the midst of a rapid expansion plan, VCU is recruiting multiple faculty members in biostatistics, health administration, epidemiology, and social and behavioral health.

For more information, please contact the academic department chairs:

**Biostatistics:** Shumei Sun, PhD,  
ssun@vcu.edu

**Epidemiology:** Kate Lapane, PhD,  
kllapane@vcu.edu

**Health Administration:**  
Stephen S. Mick, PhD, micks@vcu.edu

**Social and Behavioral Health:**  
Laura Simonoff, PhD, lasiminoff@vcu.edu

## Located in the heart of Richmond

Richmond is located within two hours of Washington D.C., the Blue Ridge mountains, the Chesapeake Bay, and the Atlantic Ocean beaches. Richmond offers many cultural and educational centers, while still enjoying beautiful surroundings. The city has many museums, historical houses and sites, and cultural activities.

### MPH Program Contacts:

Department of Epidemiology and Community Health  
P.O. Box 980212  
Richmond, VA 23298-0212  
Phone: (804) 828-9785  
Fax: (804) 828-9773  
mph@vcu.edu  
www.epidemiology.vcu.edu

### Director of Educational Programs

**Lisa S. Anderson, MPH**  
Phone: (804) 828-9785  
lsanders@vcu.edu

### MPH Program Coordinator

Karen Bryant  
Phone: (804) 828-9786  
kpbryant@vcu.edu

Virginia Commonwealth University is an equal opportunity, affirmative action university providing access to education and employment without regard to age, race, color, national origin, gender, religion, sexual orientation, veteran's status, political affiliation or disability. If special accommodations are needed, please contact Karen Bryant at 804.828.9786.

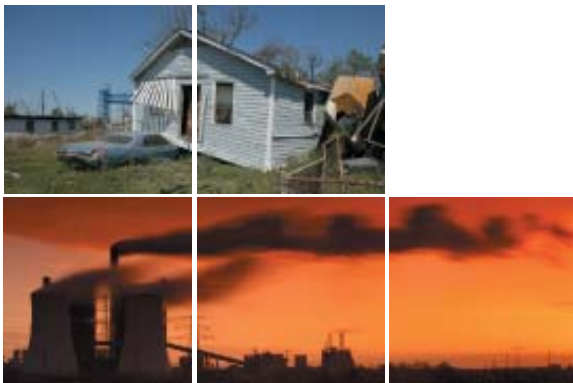


## Why Choose Public Health?

The Master of Public Health (MPH) degree is a professional degree that prepares students for careers in public health, a multidisciplinary field dedicated to maintaining and improving the health of populations—in communities, regions, and around the world. Examples of public health careers include health department epidemiologist, community health program director, health policy analyst, and academic researcher. Public health professionals may be involved in activities such as conducting programs to reduce childhood obesity, leading initiatives to prevent cardiovascular disease, ensuring clean water supplies for communities, developing bioterrorism response plans, or lobbying for legislation to improve access to health care for underserved populations.

## Mission Statement

The mission of the MPH program at Virginia Commonwealth University is to promote health and well-being through commitment to public health education, excellence in research, and dedication to community service.



## Master of Public Health Degree

Fully accredited by the Council on Education for Public Health, the MPH Program at Virginia Commonwealth University was the first of its kind in the state and has graduated more than 300 students since its inception. The program has been ranked among the top 20 community health programs in the nation by US News & World Report.

The MPH degree requires a minimum of 45 credit hours, which can be completed in 4 full semesters. Practicing physicians or persons holding a doctoral degree may be eligible for a waiver of 9 credits. An internship exposes students to real-life problems encountered by public health professionals, and a scholarly research project integrates students' skills and knowledge from their coursework.

## Specialty Tracks

The MPH Program currently offers three specialty tracks, administered by the Department of Epidemiology & Community Health and the Social and Behavioral Health Department. Students may also design a customized curriculum focusing on an area of interest not included in the available tracks.

**Generalist Track:** gives students a broad overview of public health issues and training in epidemiologic and biostatistical methods commonly used by public health professionals.

**Epidemiology Track:** designed to train students who want to specialize in research methods and analysis and interpretation of public health data.

**Social and Behavioral Sciences Track:** designed for students who want to understand behavioral and social factors associated with mortality and morbidity and to participate in

the design, implementation, and evaluation of interventions, programs, and policies that address these factors.

## Dual Degrees

The Department currently offers an MD/MPH degree, an MPH/PharmD degree, and an MPH/MSW degree.

## How to Apply

Students are admitted to the program in the Fall semester only. Applications for the MPH Program are strongly encouraged by December 15th. All elements of the application must be present by the application deadline for the application to be considered. To be considered for admission, students must hold a Baccalaureate or a more advanced degree from an accredited institution and:

- provide Graduate Record Exam (GRE) scores (taken within the past 5 years)
- provide official copies of undergraduate and any graduate transcripts (an undergraduate grade point average (GPA) of 3.0 or higher on a 4.0 scale is preferred);
- provide 3 current letters of recommendation;
- provide a copy of a curriculum vitae or resume; and
- provide a personal statement of interest in the MPH program.

A background in the biological sciences and statistics is helpful but is not required.

